

RenaLife™ Cell Culture Medium Specification Sheet



RenaLife Cell Culture Medium

RenaLife is a new medium optimized for the culture of human renal epithelial cells. RenaLife supports the growth of these cells over a period of at least 15 population doublings. RenaLife contains no antimicrobials and no phenol red since these components can cause cell stress and “masking effects” that may influence experimental results. Lifeline offers these traditional supplements; however they are not needed, or recommended, to achieve optimal cell performance.

RenaLife Cell Culture Medium Components

RenaLife is offered in a kit format composed of basal medium and associated supplements and growth factors called “LifeFactors®.” This kit allows you to prepare fresh medium in your laboratory, extending shelf life and enhancing performance. RenaLife Basal Medium is provided in a

light-protected 500 mL bottle. The remaining LifeFactors (growth factors and supplements) are packaged in a convenient gas-impermeable pouch for easy storage.

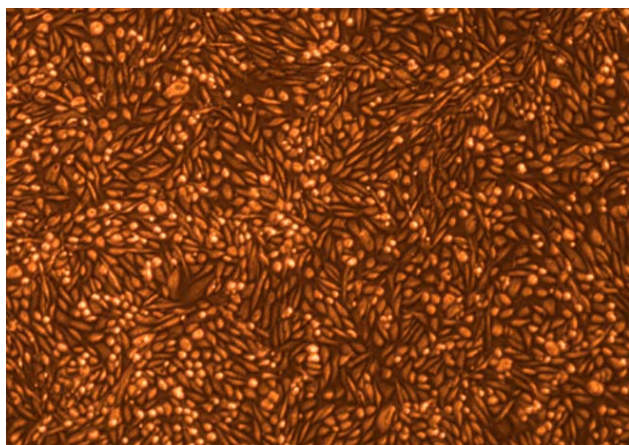
Product	Part No.	Volume To Add	Final Concentrations in Supplemented Medium	Storage
RenaLife Medium Complete Kit, (RenaLife Basal Medium – 485 mL, RenaLife LifeFactors Kit)	LL-0025			2-8°C when prepared
RenaLife Basal Medium	LM-0010	485 mL		2-8°C
RenaLife LifeFactors Kit	LS-1048			-20°C
rh Insulin LifeFactor	LS-1004	0.5 mL	5 µg/mL	-20°C
Hydrocortisone Hemisuccinate LifeFactor	LS-1039	0.5 mL	0.1 µg/mL	-20°C
L-Alanyl-L-Glutamine LifeFactor	LS-1053	6 mL	2.4 mM	-20°C
Epinephrine LifeFactor	LS-1032	0.5 mL	1.0 µM	-20°C
Transferrin PS LifeFactor	LS-1052	0.5 mL	5 µg/mL	-20°C
FBS LifeFactor	LS-1042	2.5 mL	0.5%	-20°C
Triiodothyronine LifeFactor	LS-1044	0.5 mL	10 nM	-20°C
rh EGF LifeFactor	LS-1046	1.0 mL	10 ng/mL	-20°C
Optional Supplements	Part No.	Volume	Concentrations of Supplement	Storage
Calcium Chloride LifeFactor	LS-1049	0.5 mL	890 mM	RT
Phenol Red Supplement	LS-1009	1.0 mL	33 mM	RT
Antimicrobial Supplement: Penicillin, Streptomycin and Amphotericin B	LS-1011	1.0 mL	Penicillin 10,000 Units/mL Streptomycin 10,000 µg/mL Amphotericin B 25 µg/mL	-20°C

Quality Testing for Guaranteed Consistency and Reproducible Results

Lifeline Cell Technology manufactures products using the highest quality raw materials and incorporates ISO style quality assurance in every production run. Exacting standards and production procedures ensure lot-to-lot consistency. Every production lot of RenaLife Medium is extensively tested using renal epithelial cells.

- Sterility Testing Negative for bacterial and fungal growth
- pH 7.5 +/- 0.2
- Cell Testing Rate of proliferation and morphology
- Osmolality 315 +/- 10 mOsm
- Endotoxin < 0.5 EU/mL

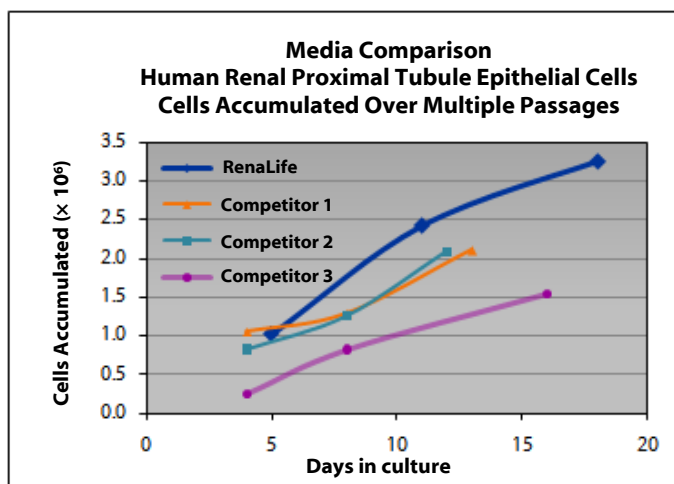
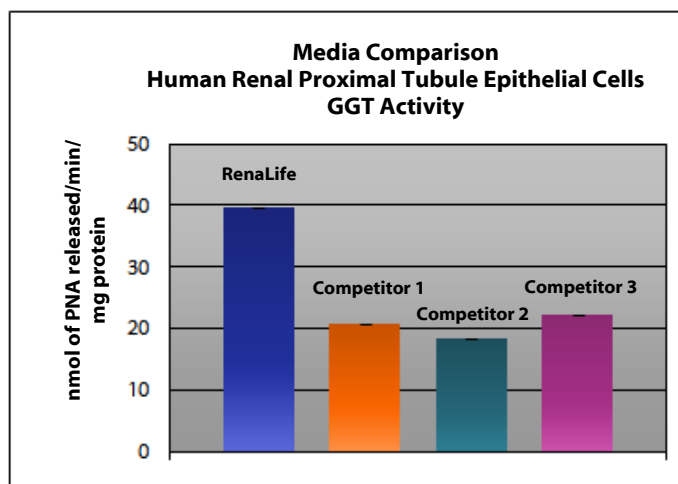
To place an order, please visit lifelinecelltech.com or call technical and customer service at 877.845.7787.



Renal Cortical Epithelial Cells, 3rd subculture, 100X

RenalLife™ Medium grows human renal epithelial cells through at least 15 population doublings at rates that are comparable to other commercially available low-serum media while maintaining more characteristic epithelial morphology, e.g. more compact cuboidal shape, high refractive index and clarity of the cytoplasm.

Shown below: γ -Glutamyltransferase (GGT) assay. The substrate (γ -glutamyl-p-nitroanilide) and acceptor molecule (glycylglycine) are incubated with the cells in a sodium phosphate buffer for 30 minutes at 37°C. The released product is p-nitroaniline (PNA). The absorbance at 405 nm is measured and compared against a standard curve of PNA. Protein is quantified using a modified Bradford method.



The Lifeline® Guarantee

Lifeline's rigorous quality control ensures sterility and performance to standardized testing criteria. If Lifeline's products do not meet our posted performance and quality standards, we will replace them at no charge or provide a full refund. Upon request, Lifeline will provide lot-specific QC test results, material safety data sheets and certificates of analysis. See complete guarantee/warranty statement at lifelinecelltech.com or contact your Lifeline representative for more information.

Innovative Packaging Features

Lifeline has made significant improvements to traditional medium packaging.

- The specially designed shrink label works as a light barrier to help protect medium from light damage.
- A barrier sleeve helps protect the medium from contaminants found in the water bath.
- Lifeline is an environmentally friendly company. Our cell culture media bottles are recyclable and we ship all products with biodegradable packing material.

Safety Statement

This product is for Research Use Only. This product is not approved for human or veterinary use, or for use in *in vitro* diagnostics or clinical procedures.

Call Lifeline Technical Service and Sales at 877.845.7787
or visit lifelinecelltech.com for more information

Lifeline Cell Technology – 10 East Frederick Street – Walkersville, MD 21793

©2010 Lifeline Cell Technology. All Rights Reserved