

OcuLife™ Corneal Epithelial Cell Culture Medium Specification Sheet



OcuLife Cell Culture Medium

OcuLife is a new medium optimized for the culture of human corneal epithelial cells. OcuLife supports the growth of these cells over a period of at least three passages. OcuLife contains no antimicrobials and no phenol red since these components can cause cell stress and “masking effects” that may influence experimental results. Lifeline® offers these traditional supplements; however they are not needed, or recommended, to achieve optimal cell performance.

OcuLife Culture Medium Components

OcuLife is offered in a kit format composed of basal medium and associated supplements and growth factors called “LifeFactors®.” This kit allows you to

prepare fresh medium in your laboratory, extending shelf life and enhancing performance. OcuLife Basal Medium is provided in a light-protected 500 mL bottle. The remaining LifeFactors (growth factors and supplements) are packaged in a convenient gas-impermeable pouch for easy storage.

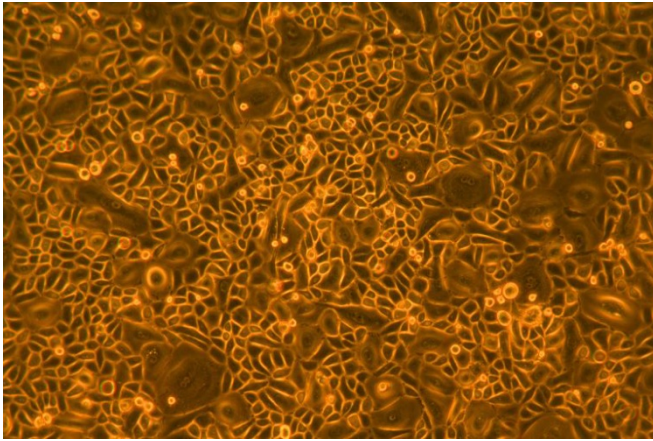
Product	Part No.	Volume To Add	Final Concentrations in Supplemented Medium	Storage
OcuLife Medium Complete Kit, (OcuLife Basal Medium – 485 mL, OcuLife LifeFactors Kit)	LL-0032	Kit		2-8°C when prepared
OcuLife Basal Medium	LM-0012	485 mL		2-8°C
OcuLife LifeFactors Kit	LS-1057	Kit		-20°C
rh Insulin LifeFactor	LS-1004	0.5 mL	5 µg/mL	-20°C
L-Glutamine LifeFactor	LS-1031	15 mL	6 mM	-20°C
Epinephrine LifeFactor	LS-1032	0.5 mL	1.0 µM	-20°C
Apo-Transferrin LifeFactor	LS-1033	0.5 mL	5 µg/mL	-20°C
Extract P LifeFactor	LS-1037	2 mL	0.4%	-20°C
Hydrocortisone Hemisuccinate LifeFactor	LS-1039	0.5 mL	100 ng/mL	-20°C
OcuFactor™ LifeFactor	LS-1076	1.0 mL	Proprietary	-20°C
Optional Supplements	Part No.	Volume	Concentrations of Supplement	Storage
Phenol Red Supplement	LS-1009	1.0 mL	33 mM	RT
Antimicrobial Supplement: Penicillin, Streptomycin and Amphotericin B	LS-1011	1.0 mL	Penicillin 10,000 Units/mL Streptomycin 10,000 µg/mL Amphotericin B 25 µg/mL	-20°C

Quality Testing for Guaranteed Consistency and Reproducible Results

Lifeline Cell Technology manufactures products using the highest quality raw materials and incorporates ISO style quality assurance in every production run. Exacting standards and production procedures ensure lot-to-lot consistency. Every production lot of OcuLife Medium is extensively tested using human corneal epithelial cells.

- Sterility Testing Negative for bacteria and fungal growth
- pH 7.5 +/- 0.2
- Cell Testing Rate of proliferation and morphology
- Osmolality 315 +/- 10 mOsm
- Endotoxin < 0.5 EU/mL

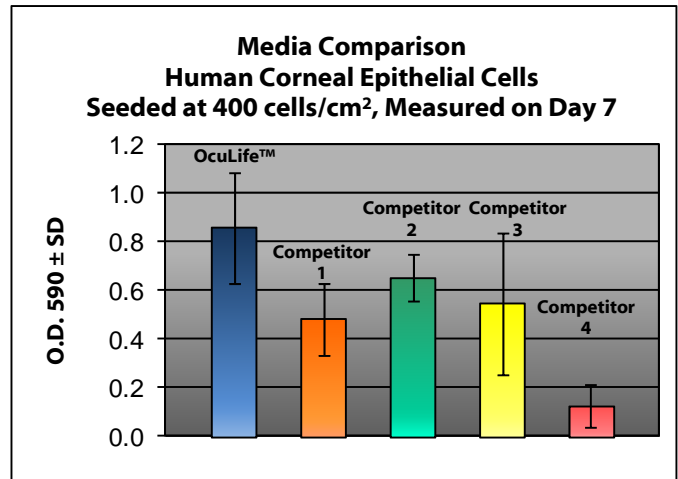
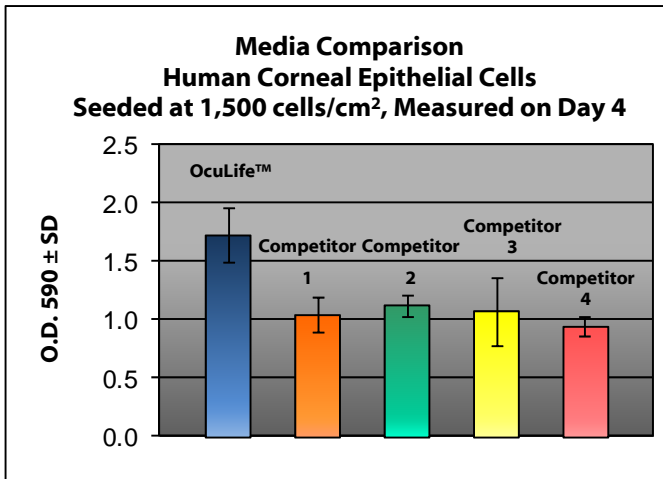
To place an order, please visit lifelinecelltech.com or call technical and customer service at 877.845.7787.



OcuLife™ Medium grows human corneal epithelial cells with optimal morphology over a period of at least three passages. In comparisons with other commercially available media, OcuLife shows superior proliferation at different seeding densities.

Image at left: human corneal epithelial cells, passage 3, 8 days after inoculation at 5,000 cells/cm², 100X

Shown below: corneal epithelial cells inoculated at the stated density in 24-well plates and stained with crystal violet on Day 4 or Day 7; higher O.D. = greater proliferation rate.



The Lifeline® Guarantee

Lifeline's rigorous quality control ensures sterility and performance to standardized testing criteria. If Lifeline's products do not meet our posted performance and quality standards, we will replace them at no charge or provide a full refund. Upon request, Lifeline will provide lot-specific QC test results, material safety data sheets and certificates of analysis. See complete guarantee/warranty statement at lifelinecelltech.com or contact your Lifeline representative for more information.

Innovative Packaging Features

Lifeline has made significant improvements to traditional medium packaging.

- The specially designed shrink label works as a light barrier to protect medium from light damage.
- A water bath sleeve helps protect the medium from contaminants found in the water bath.
- Lifeline is an environmentally friendly company. Our cell culture media bottles are recyclable and we ship all products with biodegradable packing material.

Safety Statement

This product is for research use only. This product is not approved for human or veterinary use, or for use in *in vitro* diagnostics or clinical procedures.

Call Lifeline Technical Service and Sales at 877.845.7787
or visit lifelinecelltech.com for more information

Lifeline Cell Technology – 10 East Frederick Street – Walkersville, MD 21793

©2010 Lifeline Cell Technology. All Rights Reserved