

## BronchiaLife™ B/T Bronchial/Tracheal Epithelial Cell Culture Medium Specification Sheet



### BronchiaLife B/T Cell Culture Medium

BronchiaLife B/T is a new medium optimized for the serum-free culture of human airway epithelial cells. BronchiaLife supports the growth of these cells over a period of at least 15 population doublings. BronchiaLife contains no antimicrobials and no phenol red since these components can cause cell stress and “masking effects” that may influence experimental results. Lifeline offers these traditional supplements; however these are not needed, or recommended, to achieve optimal cell performance.

### BronchiaLife B/T Culture Medium Components

BronchiaLife is offered in a kit format composed of basal medium and associated supplements and growth factors called “LifeFactors®.” This kit allows you to prepare fresh medium in your laboratory, extending shelf life and

enhancing performance. BronchiaLife Basal Medium is provided in a light-protected 500 mL bottle. The remaining LifeFactors (growth factors and supplements) are packaged in a convenient gas-impermeable pouch for easy storage.

Product	Part No.	Volume To Add	Final Concentrations in Supplemented Medium	Storage
<b>BronchiaLife B/T Medium Complete Kit, (BronchiaLife Basal Medium – 485 mL, BronchiaLife B/T LifeFactors Kit)</b>	LL-0023			2-8°C when prepared
<b>BronchiaLife Basal Medium</b>	LM-0007	485 mL		2-8°C
<b>BronchiaLife B/T LifeFactors Kit</b>	LS-1047			-20°C
HLL Supplement LifeFactor	LS-1001	1.25 mL	HSA-500 µg/mL Linoleic Acid-0.6 µM Lecithin-0.6 µg/mL	-20°C
L-Glutamine LifeFactor	LS-1031	15 mL	6 mM	-20°C
Extract P™ LifeFactor	LS-1037	2 mL	0.4%	-20°C
TM1 LifeFactor	LS-1055	5 mL	Epinephrine – 1.0 µM Transferrin PS – 5 µg/mL T3 – 10 nM Hydrocortisone – 0.1 µg/mL rh EGF – 5 ng/mL rh Insulin – 5 µg/mL	-20°C
Optional Supplements	Part No.	Volume	Concentrations of Supplement	Storage
Phenol Red Supplement	LS-1009	1.0 mL	33 mM	RT
Antimicrobial Supplement: Penicillin, Streptomycin and Amphotericin B	LS-1011	1.0 mL	Penicillin 10,000 Units/mL Streptomycin 10,000 µg/mL Amphotericin B 25 µg/mL	-20°C

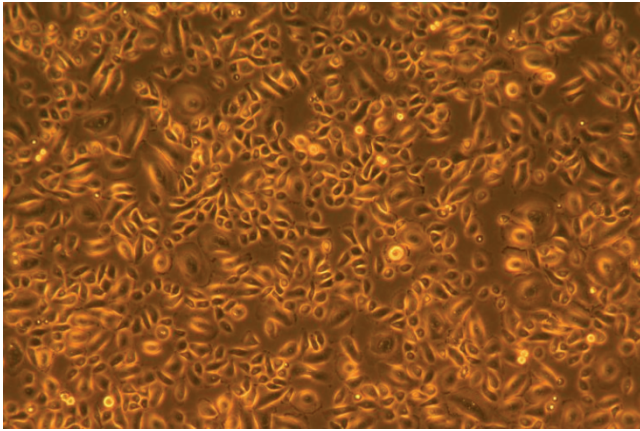
### Quality Testing for Guaranteed Consistency and Reproducible Results

Lifeline Cell Technology manufactures products using the highest quality raw materials and incorporates ISO style quality assurance in every production run. Exacting standards and production procedures ensure lot-to-lot consistency. Every production lot of BronchiaLife B/T Medium is extensively tested using human airway epithelial cells.

- Sterility Testing Negative for bacterial and fungal growth
- pH 7.5 +/- 0.2
- Cell Testing Rate of proliferation and morphology
- Osmolality 315 +/- 10 mOsm
- Endotoxin < 0.5 EU/mL

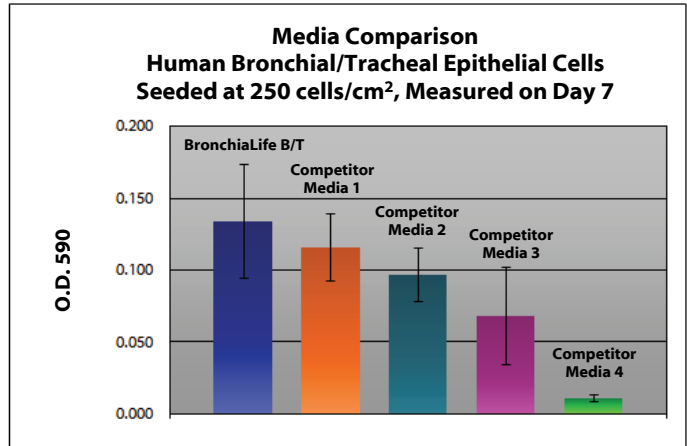
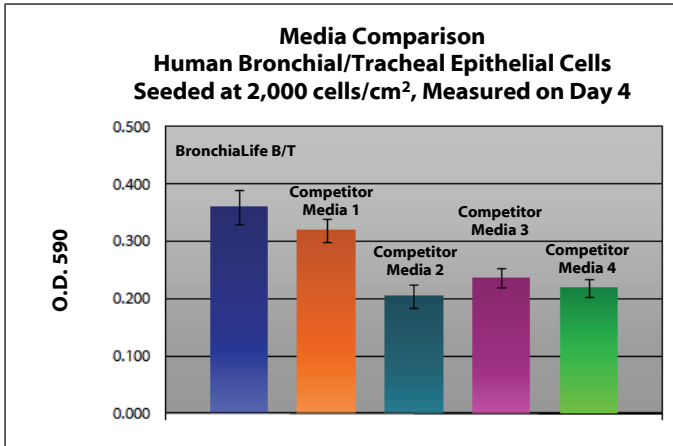
To place an order, please visit [lifelinecelltech.com](http://lifelinecelltech.com) or call technical and customer service at 877.845.7787.

**Lifeline Cell Technology • 10 East Frederick Street • Walkersville, MD 21793**



BronchiaLife™ B/T Medium grows human bronchial/tracheal epithelial cells through at least 15 population doublings at rates that meet or exceed other commercially available media while maintaining excellent cell morphology. In comparisons with other commercially available media, BronchiaLife shows superior proliferation at different seeding densities.

Shown at left: Human Bronchial/Tracheal Epithelial Cells, passage 3, 4 days after inoculation with 5,000 cells/cm<sup>2</sup> (100X)  
 Shown below: proliferation at low seeding density in 24-well plates. Higher O.D. 590 represents a greater number of cells per well and therefore better proliferation.



### The Lifeline® Guarantee

Lifeline's rigorous quality control ensures sterility and performance to standardized testing criteria. If Lifeline's products do not meet our posted performance and quality standards, we will replace them at no charge or provide a full refund. Upon request, Lifeline will provide lot-specific QC test results, material safety data sheets and certificates of analysis. See complete guarantee/warranty statement at [lifelinecelltech.com](http://lifelinecelltech.com) or contact your Lifeline representative for more information.

### Innovative Packaging Features

Lifeline has made significant improvements to traditional medium packaging.

- The specially designed shrink label works as a light barrier to help protect medium from light damage.
- A barrier sleeve helps protect the medium from contaminants found in the water bath.
- Lifeline is an environmentally friendly company. Our cell culture media bottles are recyclable and we ship all products with biodegradable packing material.

### Safety Statement

This product is for Research Use Only. This product is not approved for human or veterinary use, or for use in *in vitro* diagnostics or clinical procedures.

**Call Lifeline Technical Service and Sales at 877.845.7787**  
 or visit [lifelinecelltech.com](http://lifelinecelltech.com) for more information

**Lifeline Cell Technology – 10 East Frederick Street – Walkersville, MD 21793**

©2010 Lifeline Cell Technology. All Rights Reserved