



## Normal Human Smooth Muscle Cells (HSMC) Specification Sheet

- Human Aortic Smooth Muscle Cells (HAoSMC)**
- Human Pulmonary Artery Smooth Muscle Cells (HPASMC)**
- Human Coronary Artery Smooth Muscle Cells (HCASMC)**
- Human Lung Smooth Muscle Cells (HLSCM)**

Lifeline's normal HSMC, when grown in Lifeline's VascuLife® SMC Medium, provide an ideal low serum (5%) culture model for the study of angiogenesis, atherosclerosis, diabetes or vascular/pulmonary biology.

Lifeline's HSMC are cryopreserved as secondary cells\* to ensure the highest viability, purity and plating efficiency. Our HSMC are quality tested in VascuLife SMC Medium and demonstrate optimal low serum growth over a period of at least 15 population doublings at rates equal to or greater than other serum-supplemented media. Lifeline's HSMC are not exposed to antimicrobials or phenol red when cultured in VascuLife SMC Medium; an advantage since these supplements can cause cell stress and "masking effects" that may negatively impact experimental results. Lifeline offers these traditional supplements; however they are not needed, or recommended, to achieve optimal cell performance in most research applications.

CELL FEATURES:	
<ul style="list-style-type: none"> <li>• HSMC are cryopreserved as secondary cells, e.g. cells are isolated from the stated tissue and expanded in culture vessels twice before cryopreservation.</li> <li>• HAoSMC are isolated from human aorta (ascending and/or descending).</li> <li>• HPASMC are isolated from human pulmonary artery.</li> <li>• HCASMC are isolated from human coronary arteries.</li> <li>• HLSCM are isolated from the lobes of the lungs.</li> </ul>	
<ul style="list-style-type: none"> <li>• HSMC can be grown without phenol red or antimicrobials when cultured in VascuLife SMC Medium.</li> </ul>	
<ul style="list-style-type: none"> <li>• HSMC are extensively tested to meet quality standards and exhibit optimal performance.</li> </ul>	
<ul style="list-style-type: none"> <li>• Lifeline guarantees performance and quality.</li> </ul>	

NORMAL HUMAN VASCULAR SMOOTH MUSCLE CELLS ARE TESTED FOR:	
<ul style="list-style-type: none"> <li>• Cell Count</li> </ul>	500,000 cryopreserved cells per vial
<ul style="list-style-type: none"> <li>• Proliferation and Morphology</li> </ul>	Normal cell appearance for 15 population doublings
<ul style="list-style-type: none"> <li>• Cell Viability</li> </ul>	Minimum 50% viability when thawed from cryopreservation
<ul style="list-style-type: none"> <li>• Sterility Testing</li> </ul>	Negative for mycoplasma Negative for bacterial and fungal growth
<ul style="list-style-type: none"> <li>• Virus Testing</li> </ul>	Negative for HIV-1, HIV-2, HBV, and HCV by PCR
<ul style="list-style-type: none"> <li>• Specific Staining</li> </ul>	von Willebrand Factor negative Smooth muscle $\alpha$ -actin positive after differentiation

*\*Lifeline Technical Note: There are different and often contradictory terminologies used by cell culture companies to define the passage number of cells. Lifeline's designation of 'primary cells' are cells that have been isolated from tissue, plated onto culture vessels, expanded, harvested and cryopreserved. The term 'secondary' indicates that the cells have been isolated, plated and expanded in culture vessels twice before being harvested for cryopreservation.*

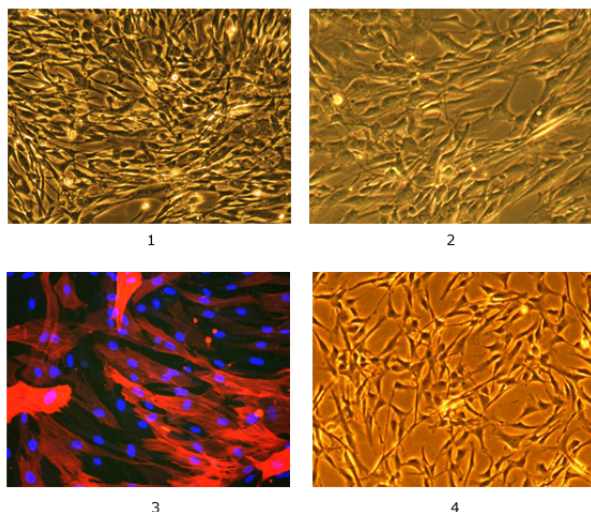
To place an order, please visit [lifelinecelltech.com](http://lifelinecelltech.com) or call technical and customer service at 877.845.7787.

## Quality Testing for Guaranteed Consistency and Reproducible Results

Lifeline Cell Technology manufactures products using the highest quality raw materials and incorporates extensive quality control in every production run. Exacting standards and routine production procedures ensure consistent performance.

### The Lifeline® Guarantee

Lifeline's rigorous quality control ensures sterility and performance to standardized testing criteria. All donated tissues have been obtained under proper informed consent and adheres to the Declaration of Helsinki, The Human Tissue Act (UK), CFR Title 21, and HIPPA Regulations relative to obtaining and handling human tissue for Research Use. If Lifeline's products do not meet our posted performance and quality standards, we will replace them at no charge or provide a full refund. Upon request, Lifeline will provide lot specific QC test results, material safety data sheets, and certificates of analysis. See complete guarantee/warranty statement at [lifelinecelltech.com](http://lifelinecelltech.com) or contact your Lifeline representative for more information.



Smooth muscle cells, 100X 1) HAoSMC 2) HPASMC 3) Lung SMC immunostained for smooth muscle  $\alpha$ -actin (red), nuclei stained with Hoechst (blue) 4) HCASMC

### Safety Statement

This product is For Research Use Only and is not approved for human or veterinary use, or for use in *in vitro* diagnostic or in clinical procedures.

Lifeline recommends storing cryopreserved vials in liquid nitrogen vapor phase. Handle cryopreserved vials with caution. Always wear eye protection and gloves when working with cell cultures. Aseptically vent any nitrogen from cryopreserved vials in a biosafety cabinet prior to thawing the vials in a water bath. If vials must be stored in liquid phase, the vials should be transferred to vapor phase storage or  $-80^{\circ}\text{C}$  for up to 24 hours prior to being thawed.

### PRODUCT INFORMATION:

Part #	Description
<a href="#">FC-0015</a>	HAoSMC, Normal Human Aortic Smooth Muscle Cells, Secondary – 500,000 cells per vial
<a href="#">FC-0031</a>	HCASMC, Human Coronary Artery Smooth Muscle Cells, Secondary – 500,000 cells per vial
<a href="#">FC-0056</a>	HPASMC, Human Pulmonary Artery Smooth Muscle Cells, Secondary – 500,000 cells per vial
<a href="#">FC-0046</a>	HLMSC, Human Lung Smooth Muscle Cells, Secondary – 500,000 cells per vial
<a href="#">LL-0014</a>	VascuLife® SMC Complete Kit (VascuLife Basal Medium, VascuLife SMC LifeFactors® Kit)

**Call Lifeline Technical Service and Sales at 877.845.7787**  
or visit [lifelinecelltech.com](http://lifelinecelltech.com) for more information

**Lifeline Cell Technology – 8425 Progress Drive, Suite Z – Frederick, MD 21701**

©2011 Lifeline Cell Technology. All Rights Reserved