



Normal Human Prostate Epithelial Cells (HPrEC) Specification Sheet

Lifeline’s normal Human Prostate Epithelial Cells (HPrEC), when grown in Lifeline’s ProstaLife™ Medium, provides an ideal serum-free culture model, without retinoic acid, for the study of prostate cells. Common uses for HPrEC are studies of hormonal regulation of the prostate, regulation and control of the secretory function of prostate cells and as a control for the study of prostate cancer.

Lifeline’s HPrEC are cryopreserved as secondary cells* to ensure the highest viability and plating efficiency. Our HPrEC are quality tested in ProstaLife Medium to ensure optimal serum-free growth over a period of at least 15 population doublings at rates equal to or greater than serum-supplemented media. Lifeline’s HPrEC are not exposed to antimicrobials or phenol red when cultured in ProstaLife medium; an advantage since these supplements can cause cell stress and “masking effects” that may negatively impact experimental results. Lifeline offers these traditional supplements; however they are not recommended, or needed, to achieve optimal cell performance in most research applications.

CELL FEATURES:	
•	HPrEC are cryopreserved as secondary cells, e.g. cells are isolated from human prostate tissue and expanded twice in culture vessels before being harvested for cryopreservation.
•	HPrEC proliferate in a serum-free, retinoic acid-free medium without phenol red or antimicrobials when cultured in ProstaLife medium.
•	HPrEC are extensively tested for quality and optimal performance.
•	Lifeline guarantees performance and quality.

Quality Testing for Guaranteed Consistency and Reproducible Results

Lifeline Cell Technology manufactures products using the highest quality raw materials and incorporates extensive quality assurance in every production run. Exacting standards and production procedures ensure consistent performance.

NORMAL HUMAN PROSTATE EPITHELIAL CELLS ARE TESTED FOR:	
• Cell Count	500,000 cryopreserved cells per vial
• Proliferation and Morphology in Fully Supplemented ProstaLife™ Medium	Normal cell appearance for 15 population doublings
• Cell Viability	Minimum 50% viability when thawed from cryopreservation
• Sterility Testing	Negative for mycoplasma Negative for bacterial and fungal growth for 14 days
• Virus Testing	Negative for HIV-1, HIV-2, HBV, and HCV by PCR

To place an order, please visit lifelinecelltech.com or call technical and customer service at 877.845.7787.

The Lifeline® Guarantee

Lifeline's rigorous quality control ensures sterility and performance to standardized testing criteria. If Lifeline's products do not meet our posted performance and quality standards, we will replace them at no charge or provide a full refund. Upon request, Lifeline will provide lot specific QC test results, material safety data sheets, and certificates of analysis. See complete guarantee/warranty statement at lifelinecelltech.com or contact your Lifeline representative for more information.

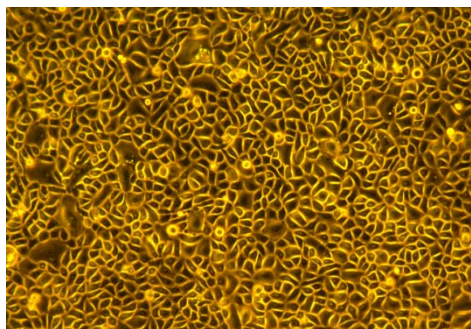
Safety Statement

This product is for Research Use Only. This product is not approved for human or veterinary use or for use in *in vitro* diagnostics or clinical procedures.

Lifeline recommends storing cryopreserved vials in liquid nitrogen vapor phase. Handle cryopreserved vials with caution. Always wear eye protection and gloves when working with cell cultures. Aseptically vent any liquid nitrogen from cryopreserved vials by carefully loosening the vial cap in a biosafety cabinet prior to thawing the vials in a water bath. If vials must be stored in liquid phase, the vials should be transferred to liquid nitrogen vapor phase storage or -80°C for up to 24 hours prior to being thawed.

PRODUCT INFORMATION:

Part #	Description
FC-0038	HPrEC, Normal Human Prostate Epithelial Cells, Secondary – 500,000 per vial
LL-0041	ProstaLife™ Medium Complete Kit (ProstaLife Basal Medium, ProstaLife LifeFactors® Kit)



HPrEC, passage 3, 5 days after inoculation with 2,500 cells/cm² (100X)

**Lifeline Technical Note: There are different and often contradictory terminologies used by cell culture companies to define the passage number of cells. Lifeline's designation of 'primary cells' are cells that have been isolated from tissue, plated onto culture vessels, expanded, harvested and frozen. The term 'secondary' indicates that the cells have been isolated, plated and expanded in culture vessels twice before being harvested for cryopreservation.*

Call Lifeline Technical Service and Sales at 877.845.7787
or visit lifelinecelltech.com for more information

Lifeline Cell Technology – 10 East Frederick Street – Walkersville, MD 21793

©2009 Lifeline Cell Technology. All Rights Reserved