

2% Alizarin Red Stain Specifications and Instruction Quick Steps



2% Alizarin Red Stain

Alizarin Red stains for calcium deposits which are indicative of functional osteocytes and is a useful tool when used with Lifeline’s mesenchymal stem cells and Lifeline’s OsteoLife™ Complete Osteogenesis Medium.

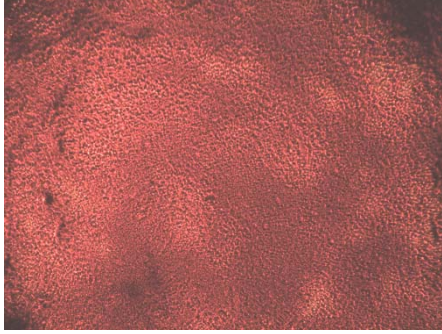
Safety Statement

These products are For Research Use Only and are not approved for human or veterinary use, or for use in *in vitro* diagnostics or clinical procedures. Please dispose of used reagents in accordance with local and federal regulations.

Product	Part No.	Volume	Kit Components	Storage
2% Alizarin Red Stain	CM-0058	100 mL	N/A	Room temp
Other Recommended Products	Part No.	Unit		Storage
Human Mesenchymal Stem Cells-Adult (HMSC-Ad)	FC-0034	10 ⁶ Cells	N/A	-150°C
StemLife™ MSC Medium Complete Kit	LL-0034	Kit	StemLife MSC Basal Medium StemLife MSC LifeFactors® Kit	2-8°C when prepared
OsteoLife™ Complete Osteogenesis Medium	LM-0023	100 mL	N/A	-20°C
Phosphate Buffered Saline	CM-0001	500 mL	N/A	Room temp
Absolute Ethanol , Deionized Water				

The Lifeline® Guarantee

Lifeline’s rigorous quality control ensures performance to standardized testing criteria. If Lifeline’s products do not meet our posted performance and quality standards, we will replace them at no charge or provide a full refund. Upon request, Lifeline will provide lot-specific QC test results, material safety data sheets and certificates of analysis. See complete guarantee/warranty statement at lifelinecelltech.com or contact your Lifeline representative for more information.



Lifeline's adult mesenchymal stem cells differentiated to osteocytes and stained with Alizarin Red (100X).

Quick Steps for Fixation and Staining of Osteocytes for Calcium Deposits in 6-Well Plates

1. Always wear eye protection and gloves when working with staining reagents.
2. Remove medium completely from well(s).
3. Gently, from the side of the well, add 1.0 mL PBS (CM-0001) (6-well).
4. Aspirate PBS.
5. Add 3 mL of absolute ethanol and fix for 30 minutes.
6. Remove ethanol and allow well(s) to dry completely.
7. Add 1.0 mL of 2% Alizarin Red Stain Solution (CM-0058) and gently tilt side-to-side until solution completely covers well.
8. Incubate for 15 minutes at room temperature
9. Remove Alizarin Red from the well(s).
10. Using care, rinse well(s) three times with 1.0 mL dH₂O and allow to dry. Take extreme care when rinsing well or calcium crystals may be dislodged and rinsed away.

For any question on cell handling, differentiation or staining, please contact technical service. We are here to help.

Call Lifeline Technical Service and Sales at [877.845.7787](tel:877.845.7787)
or visit lifelinecelltech.com for more information

lifelinecelltech.com – Lifeline Cell Technology – 877.845.7787

©2010 Lifeline Cell Technology. All Rights Reserved