



Normal Human Bladder Cells and Media

Human Bladder Epithelial Cells
 Human Bladder Smooth Muscle Cells
 Human Bladder Fibroblasts

Lifeline’s Normal Human Bladder Cells, when grown in Lifeline brand culture medium, provide ideal culture models for the study of bladder biology.

Our Bladder cell types are an excellent model for the study of bladder infections, interstitial cystitis disease, cancer of the bladder, urinary incontinence, and bladder reconstruction studies. Lifeline’s Bladder Cells are isolated from the neck/trigone area and are cryopreserved as secondary cells* to ensure the highest viability and plating efficiency. Our Bladder Epithelial Cells are cultured in ProstaLife Medium. Bladder Smooth Muscle Cells are cultured in VascuLife® SMC Medium and Bladder Fibroblasts are cultured in FibroLife® S2 Medium. Lifeline’s Bladder cells need not be exposed to antimicrobials or phenol red when cultured in Lifeline culture media. Lifeline offers these traditional supplements; however they are not needed, or recommended, to achieve optimal cell performance in most research applications; an advantage since these supplements can cause cell stress and “masking effects” that may negatively impact experimental results.

CELL FEATURES:	
•	Human Bladder Epithelial Cells are isolated from Human Bladder Epithelial tissue and are cryopreserved as secondary cells.
•	Human Bladder Smooth Muscle Cells are isolated from Human Bladder Smooth Muscle tissue and are cryopreserved as secondary cells.
•	Human Bladder Fibroblast Cells are isolated from Human Bladder Fibroblast tissue and are cryopreserved as secondary cells

NORMAL BLADDER CELLS ARE TESTED FOR:	
• Cell Count	500,000 cryopreserved cells per vial
• Sterility Testing	Negative for mycoplasma Negative for bacterial and fungal growth
• Virus Testing	Negative for HIV-1, HIV-2, HBV, and HCV by PCR

**Lifeline Technical Note: There are different and often contradictory terminologies used by cell culture companies to define the passage number of cells. Lifeline’s designation of ‘primary cells’ are cells that have been isolated from tissue, plated onto culture vessels, expanded, harvested and cryopreserved. The term ‘secondary’ indicates that the cells have been isolated, plated and expanded in culture vessels twice before being harvested for cryopreservation.*

Please refer to the Fibroblast Instruction Sheet for culturing of Lifeline’s Bladder Fibroblasts and to the Smooth Muscle Cell Instruction Sheet for culturing of Lifeline’s Bladder Smooth Muscle Cells.

To place an order, please visit lifelinecelltech.com or call technical and customer service at 877.845.7787.

Lifeline Cell Technology • 8425 Progress Drive, Suite Z • Frederick, MD 21701

Quality Testing for Guaranteed Consistency and Reproducible Results

Lifeline Cell Technology manufactures products using the highest quality raw materials and incorporates extensive quality assurance in every production run. Exacting standards and production procedures ensure consistent performance.

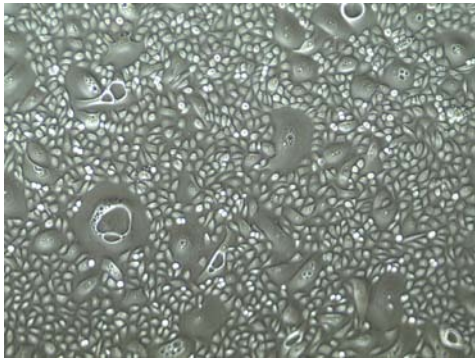
The Lifeline® Guarantee

Lifeline's rigorous quality control ensures sterility and performance to standardized testing criteria. All donated tissues have been obtained under proper informed consent and adheres to the Declaration of Helsinki, The Human Tissue Act (UK), CFR Title 21, and HIPAA Regulations relative to obtaining and handling human tissue for Research Use. If Lifeline's products do not meet our posted performance and quality standards, we will replace them at no charge or provide a full refund. Upon request, Lifeline will provide lot specific QC test results, material safety data sheets, and certificates of analysis. See complete guarantee/warranty statement at lifelinecelltech.com or contact your Lifeline representative for more information.

Safety Statement

This product is **For Research Use Only**. This product is not approved for human or veterinary use, or for use in *in vitro* diagnostic or clinical procedures.

Lifeline recommends storing cryopreserved vials in liquid nitrogen vapor phase. Handle cryopreserved vials with caution. Always wear eye protection and gloves when working with cell cultures. Aseptically vent any nitrogen from cryopreserved vials in a biosafety cabinet prior to thawing the vials in a water bath. If vials must be stored in liquid phase, the vials should be transferred to vapor phase storage or -80°C for up to 24 hours prior to being thawed.



Bladder epithelial cells cultured in ProstaLife, passage 2, 6 days after inoculation (100X).

PRODUCT INFORMATION:

Part #	Description
FC-0040	Normal Human Bladder Epithelial Cells, Secondary – 500,000 per vial
LL-0041	ProstaLife™ Medium Complete Kit (ProstaLife Basal Medium, ProstaLife LifeFactors® Kit) for the culturing of Human Bladder Epithelial Cells
FC-0050	Normal Human Bladder Fibroblasts, Secondary – 500,000 per vial
LL-0011	FibroLife® S2 Complete Kit (FibroLife Basal Medium, FibroLife S2 LifeFactors Kit) for the culturing of Human Bladder Fibroblasts Cells
FC-0043	Normal Human Bladder Smooth Muscle Cells, Secondary – 500,000 per vial
LL-0014	VascuLife® SMC Medium Complete Kit (VascuLife Basal Medium, VascuLife SMC LifeFactors Kit) for the culturing of Human Bladder Smooth Muscle Cells

Call Lifeline Technical Service and Sales at 877.845.7787
or visit lifelinecelltech.com for more information

Lifeline Cell Technology – 8425 Progress Drive, Suite Z – Frederick, MD 21701

©2011 Lifeline Cell Technology. All Rights Reserved