

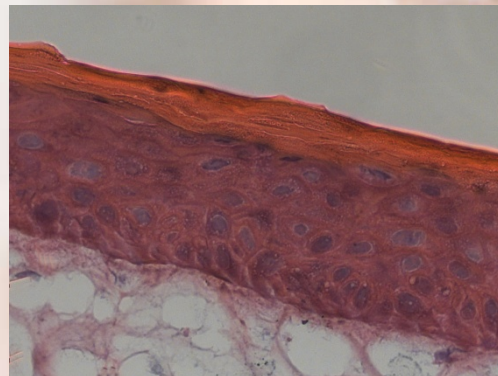
## Specification Sheet

### AST2000 (Advanced Skin Test 2000)

### Human Full Thickness Skin Model

#### DESCRIPTION

Advanced Skin Test **AST2000** is a three dimensional human skin equivalent, consisting of reconstructed human epidermis with an underlying dermis equivalent and a functional basal lamina. The *in vitro* maturation of the epidermal part is stimulated by a culture at air-liquid interphase ("airlift culture) under defined media conditions. The organotypical structure comprises of the dermis, basal lamina and epidermal part with Stratum Corneum. This physiological architecture allows the examination of the complex crosstalk between the differentiating keratinocytes and the supporting fibroblasts. **AST2000** is cultured in inserts (0.6 cm<sup>2</sup>) with a polycarbonate membrane.



Phase contrast microscopy

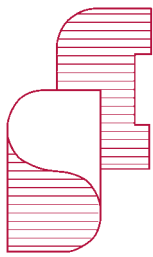
#### APPLICATIONS

**AST2000** shows an excellent *in vivo* / *in vitro* comparison and is the advanced research tool for pharmaceutical and chemical compound testing. Toxic or irritating effects of test substances can be determined by multiple end-point analysis including viability, histology and cytokine release measurement.

#### Features

- Virus testing                      negative for HIV, HBV, HCV
- Mycoplasma testing              not detected





CellSystems®

Biotechnologie Vertrieb GmbH

### AST2000 KIT CONTENT

- Human skin equivalents in 24 well plate, embedded in transport medium
  - 50 ml Maintenance medium\*
  - 25 ml Assay Medium\*
  - 6-well culture plate\*
  - Lot release documentation
- \*Volume no. depends on no. of skin equivalents

### AST2000 KIT FOR RESEARCH APPLICATIONS (UPON REQUEST)

- In different maturation stages
- Produced under custom specific conditions (i.e. w/o hydrocortisone, w/o antibiotics)
- Custom specific features are possible, please contact us

### RELATED PRODUCTS

- For culture: Maintenance medium (Ref. CS-2050)
- For histology: a) Embedding Kit (Ref. CS-0011)  
b) Embedding Medium (Ref. CS-0010)
- **EST1000** (Epidermal Skin Test 1000) (Ref. CS-1001)  
reconstructed human epidermis model

### USAGE

For research use only- not approved for human or veterinary use or for diagnostical or clinical procedures.



Epidermal Skin Test is now available in the United States exclusively through Lifeline Cell Technology. For more information, or to place a U.S. order, please call **1.877.845.7787** or email [info@lifelinecelltech.com](mailto:info@lifelinecelltech.com)

